

Hi Everyone,

It has come to my attention recently that there are two secondary ignition custom ranges that are mis-configured in the 5.09.5 software. The -1 to 9 KV range is wrong and also the 3 to 27 KVpos range. These issues are easily corrected by editing those custom ranges and then going to File-Save Settings. This will then save the changes so PicoScope opens up with your corrections next time you start up.

I have attached some images of the incorrect range dialog boxes and the corrected ones so you can see how to fix this. These boxes are accessed from Settings-Custom Ranges. I have also attached two PSD files showing the effect of one of the mis-configured range and how it looks after correction. On this Hyundai, we are looking at secondary waveforms from a single coil so one is positive and the other negative. These ranges allow you to orient them both so they are 'right side up'.

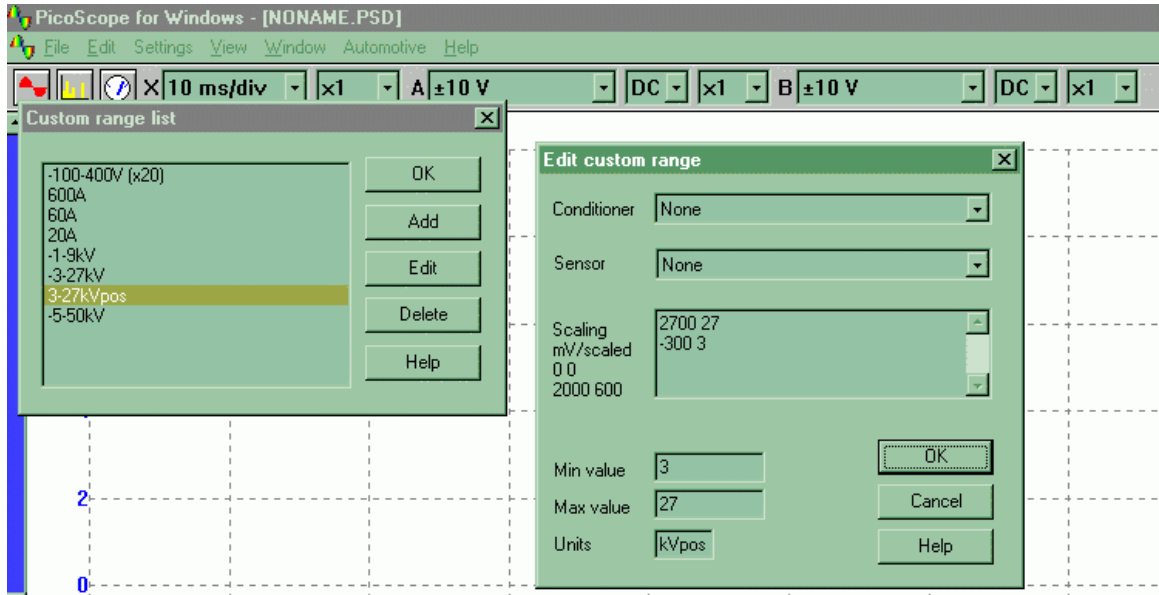
Please review your PicoScope Tips document I sent out a while back or that was enclosed with your kit. Read the Custom Ranges section again. This is a great opportunity to see the effect of an incorrectly configured range and practice making a range. Play around with making your own ranges for your preferences. This allows unlimited flexibility for you to make PicoScope do what YOU want. When you get a range you want to keep, just save settings again.

Thanks to Mac VandenBrink for bringing one of these to my attention. This is how things get fixed. If you have any questions let me know.

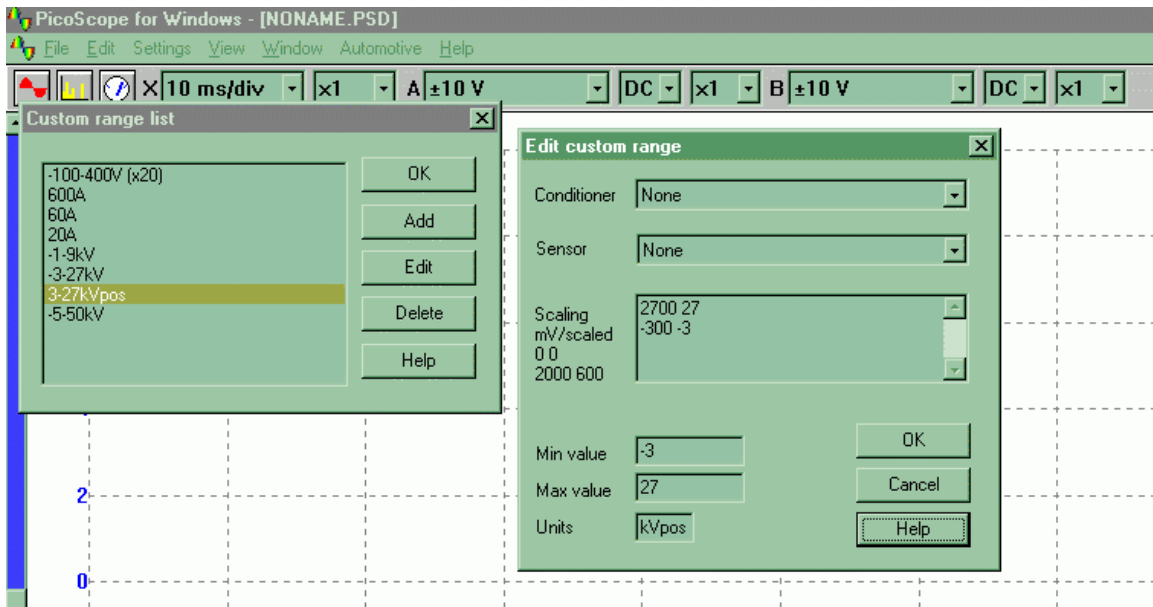
Tom Roberts
Autonerdz.com
PO Box 810
East Olympia, WA 98540
360-561-3668 cell
360-455-9130 land line

sec1.psd shows the results of the bad 3-27kv range (right click tag and save to disk)

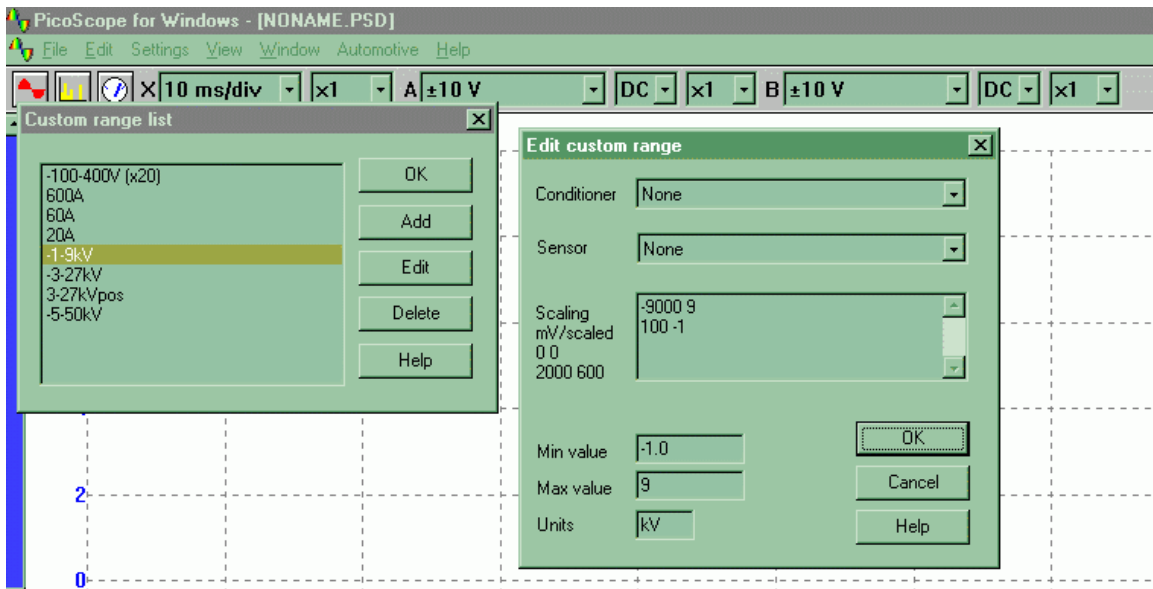
sec2.psd shows the results after the correction. (open these with PicoScope)



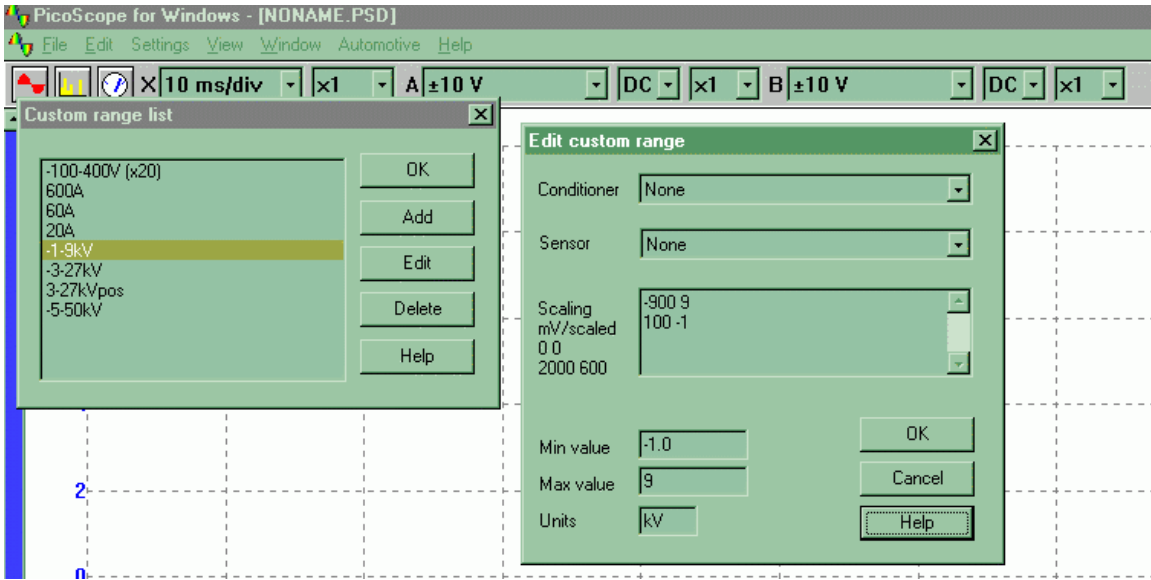
Bad Range



The Fix



Bad Range



The Fix